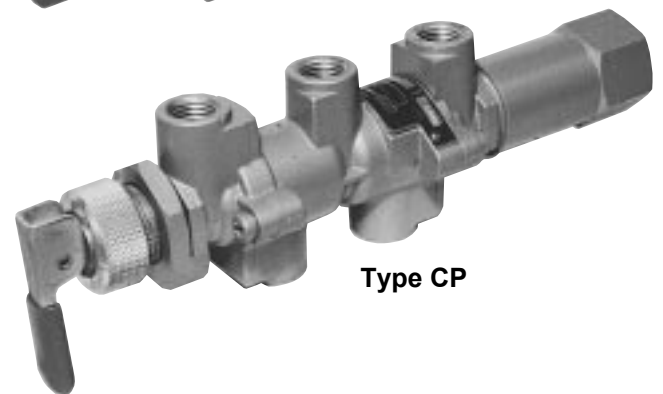
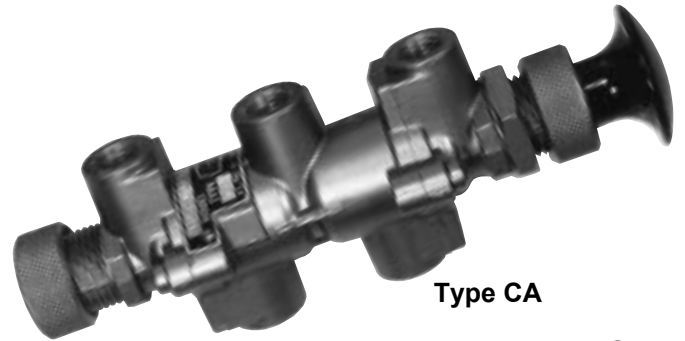




Model 4058/4458

4-Way Valves



FEATURES

- **BALANCED FORCE DESIGN - PRESSURE CAN BE APPLIED TO ANY PORT**
- **CENTER DEAD SPOT - NO PORT OVERLAP**
- **ARRANGED FOR PANEL OR BRACKET MOUNTING**
- **AVAILABLE IN ALUMINUM OR 316 STAINLESS STEEL**

APPLICATIONS

- **HYDRAULIC FLUID CONTROL**
- **ACTUATOR CONTROL**
- **PNEUMATIC PANEL SYSTEMS**
- **SAFETY CONTROL SYSTEMS**

AMOT Model 4058 or 4458 4-Way Valves were developed for use in manual and automatic hydraulic or pneumatic control systems. They offer versatility in operating requirements and allowable pressure limits. For a 1/4" size control valve, they offer exceptional flow capacity.

These valves are suitable for use on clean air, natural gas, L.P. gases, petroleum-base lubricants and hydraulic oils as well as many other fluids.

Each valve is carefully assembled, tested, and inspected to ensure that high quality standards are met. Valves are made from precision cast and machined aluminum or stainless steel parts. The unique porting arrangement eliminates seal ring cutting, and permits pressure inlet at any port without danger of seal "blow out". Standard construction permits valve pressures to 125 psi.

Certain of these valves are completely unique in the industry. For example, the 4058 or 4458 Type CP has a manual reset latch which automatically drops out on introduction of pilot pressure, and permits return stroke on loss of pilot pressure.

These valves make use of AMOT's patented "Tad-Pole" seal which provides for lower friction and longer cycle life than conventional O-rings. (U.S. Pat. No. 3,926,444)

VALVE TYPE DESCRIPTION TABLE

<p>TYPE CA</p> <p style="text-align: center;">Manual Operated 5 lbs Force Required</p>	<p>TYPE CF</p> <p style="text-align: center;">Double Pilot Operated 10 psi Pressure Required</p>
<p>TYPE CB</p> <p style="text-align: center;">Manual Pull Spring Return 15 lbs Force Required</p>	<p>TYPE CG</p> <p style="text-align: center;">Pressure Operated Spring Return 26 psi Pressure Required</p>
<p>TYPE CD</p> <p style="text-align: center;">Manual or Pressure Operated Manual Return 10 psi Pressure or 6 lbs Force Required</p>	<p>TYPE CP</p> <p style="text-align: center;">Manual Latch or Pressure Operated, Spring Return when Released 26 psi Pressure Required</p>
<p>TYPE CE</p> <p style="text-align: center;">Manual or Pressure Operated Spring Return 26 psi Pressure or 16 lbs Force Required</p>	<p>TYPE CT</p> <p style="text-align: center;">Adjustable Pressure Operated Spring Return Adjustable from 5-15 psi</p>

Note: The symbol does not designate a detent, but indicates that the valve has a memory and that the piston will remain in position until moved.

SERVICE PARTS

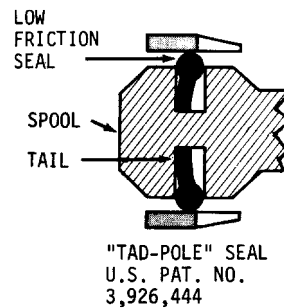
Ref No.	Part No.	Qty	Description
3	7896L002		Seal Ring, Viton
4	7898I002		Seal Ring, Viton
47	2254L002		Diaphragm, Viton, for Type CT

These Parts Lists effective with Valve Serial No. C761

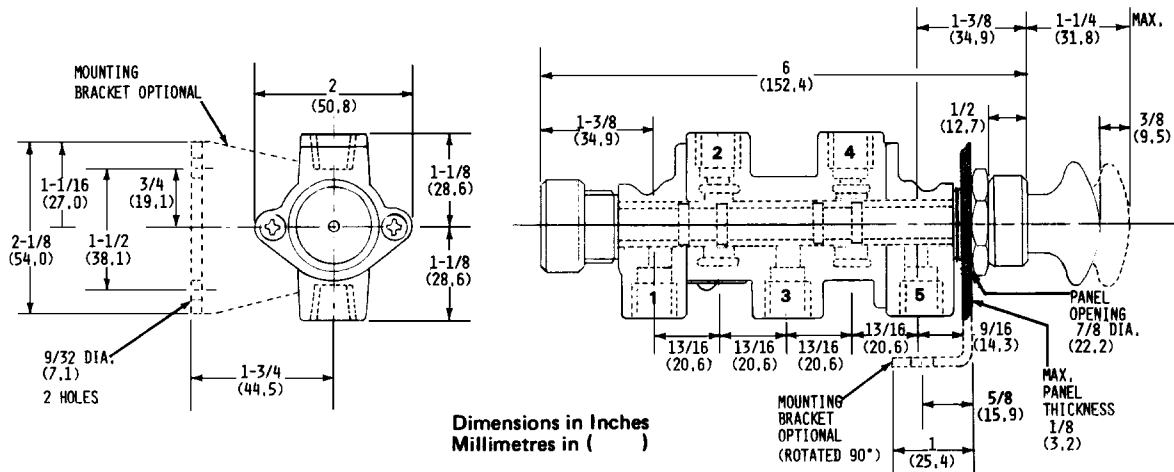
SERVICE KITS

Ref No.	Part No.	Qty	Description
For all Types except CT (Viton) Kit 9129X001			
3	7896L002	6	Seal Ring, Viton
4	7898L002	2	Seal Ring, Viton

Service Kit 9129X001 may contain extra parts when used with some valve types.



DIMENSIONS



AMOT Model 4058 or 4458 4-Way Valves feature modular construction and incorporate a sliding spool. The standard spool has a small center dead spot position and no valve port overlap. With the spool fully to the left (rest position) as shown in the diagrams, Port 2 is open to Port 3, Port 4 is open to Port 5 and Port 1 is closed. With the spool moved

to the right (actuated position), Port 2 is open to Port 1, Port 4 is Open to Port 3 and Port 5 is closed. The valves are available with a variety of manual and pressure operators and with manual, pressure or spring returns. See the valve Type Description Table for the standard variations which are available.

AMOT USA

401 First Street
Richmond, CA 94801
Tel: +1 510 236-8300
Fax: +1 510 234-9950

AMOT

Western Way
Bury St. Edmunds IP33 3SZ
Suffolk England
Tel: +44 1284 762222
Fax: +44 1284 760256

AMOT SINGAPORE

10 Eunos Road 8 # 12-06
Singapore Post Centre
Singapore 408600
Tel: +65 6293 4320
Fax: +65 6293 3307